

DOCUMENT CONTROL NUMBER /

CP820/CP820M BREAK GLASS CALLPOINTS - INSTALLATION INSTRUCTIONS

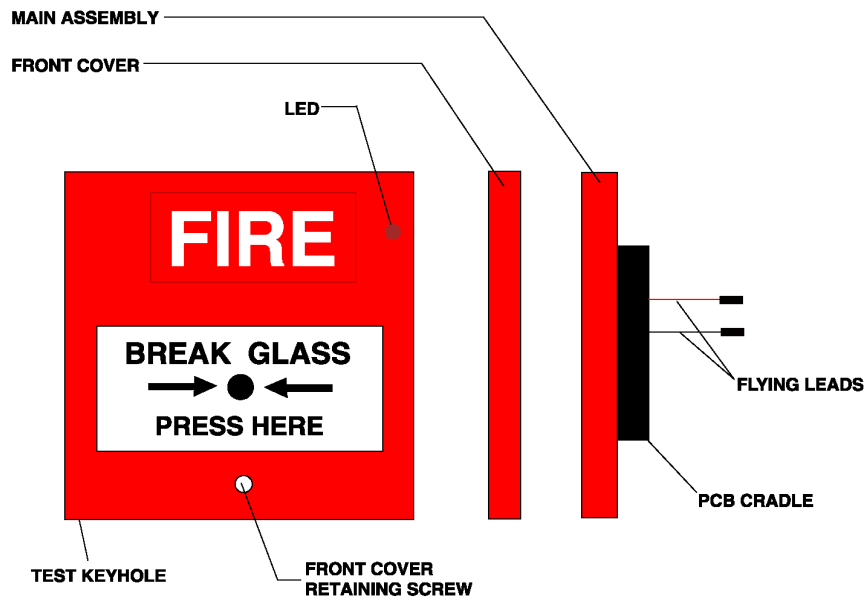


Fig. 1 CP820/CP820M Break Glass Callpoint

1. TECHNICAL SPECIFICATION

- Type Identification Value** 129 (131 Marine)
- System Compatibility:** Use only with MX Fire Alarm Controllers
- Environment:** Indoor Application only
- Operating Temperature:** -25° to +70°C
- Storage Temperature:** -40° to +80°C
- Operating Humidity:** Up to 95% non-condensing
- Dimensions (HWD):** 87 x 87 x 51mm (19mm if flush mounted)

Battery Requirements

- Standby: 0.46mA
- Alarm: 4.5mA

Electromagnetic Compatibility

The CP820 complies with the following:
Product family standard EN50130-4 in respect of Conducted Disturbances, Radiated Immunity, Electrostatic Discharge, Fast Transients and Slow High Energy
EN50081-1 for emissions

The CP820 callpoint meets the requirements of BS5839 Pt. 2 (prEN54 Pt. 11).

The CP820 is fitted to a standard KAC break glass callpoint housing, standard single gang metal plaster box (35mm for flush mounting) or standard single gang metal plaster box (25mm) with KAC housing.

Note: Plaster boxes should have 20mm knockouts.

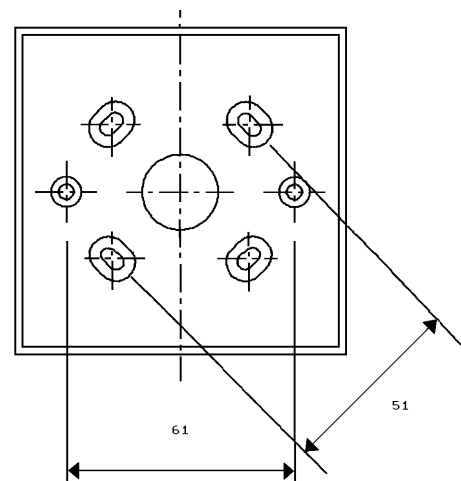


Fig. 2 CP820/CP820M Fixing Dimensions Surface Mounting

2. INTRODUCTION

CP820 Addressable Break Glass Callpoints are designed to monitor and signal the condition of a switch contact that is operated by breaking a glass sheet (the CP820M is the Marine version of the CP820). The type of alarm generated by the callpoint is configured in MX CONSYS.

800 SERIES

17A-03-CP820/CP820M

3 10/01

3. ADDRESS PROGRAMMING

The CP820 has a default factory set address of 255, this must be set to the loop address of the device using 801AP MX Service Tool. The CP820 is programmed with its address using either the programming port at the rear of the callpoint before mounting to the backbox or after mounting to the backbox, removing the front cover and glass, then using the programming port as shown in Fig. 3.

Note: Once the address has been programmed take note of the device location and address number to include on site drawings.

4. MOUNTING

Mount to a standard KAC break glass callpoint housing, or standard single gang metal plaster box (35mm for flush mounting or 25mm) with KAC housing.

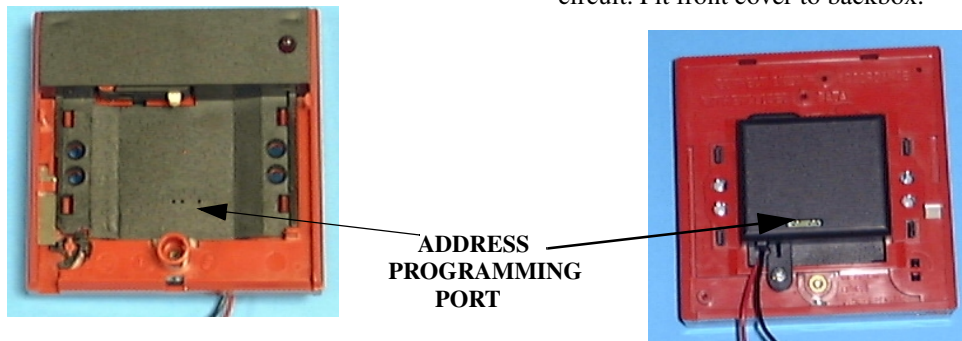


Fig. 3 CP820 - Address Programming

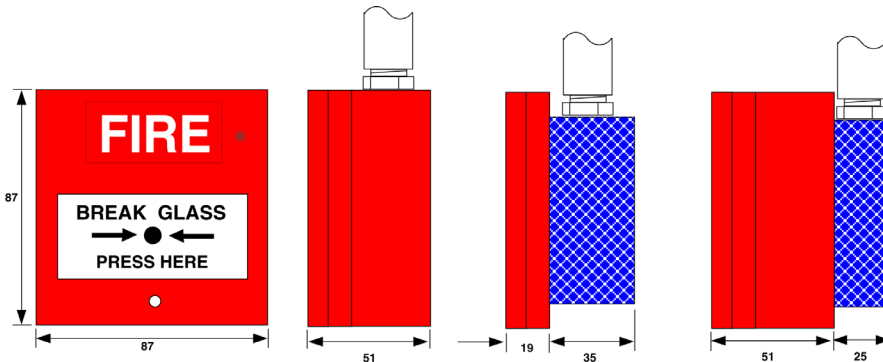


Fig. 4 CP820/CP820M - Overall and Fixing Dimensions

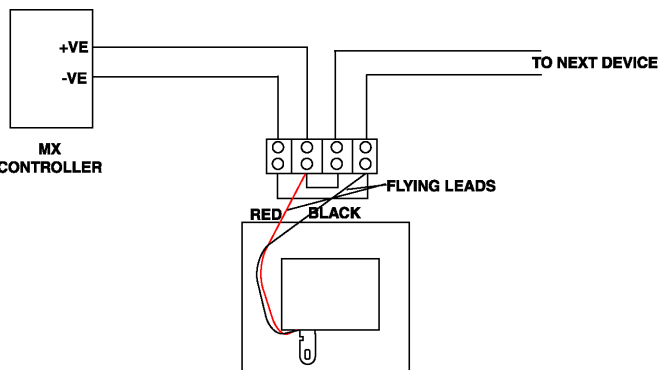


Fig. 5 CP820/CP820M - Simplified Wiring Diagram

5. CABLING

Cables are to be selected in accordance with Publication 17A-02-D and the requirements of the current issue of BS5839. Cabling should be connected as shown in Fig. 5 ensuring correct polarity. Couplers are to be used with MICC cable.

6. WIRING NOTES

- 1) There are no user-required settings (such as switches or headers) on the CP820.
- 2) All wiring must conform to the current edition of IEE Wiring Regulations and BS5839 part 1.
- 3) All conductors to be free of earths. For typical wiring configuration, see Fig. 5.
- 4) Verify the correct polarity of the wiring before connecting the CP820 to the addressable loop circuit. Fit front cover to backbox.

7. ORDERING INFORMATION

CP820 Break Glass Callpoint (Thorn):	514.800.503.T
CP820 Break Glass Callpoint (ADT):	514.800.503.A
CP820 Break Glass Callpoint (Tyco):	514.800.503.Y
CP820M Break Glass Callpoint:	514.800.505
Callpoint Glasses (pack of 5):	515.001.015
KAC Backbox:	515-001-021

JM/jm 22nd October 2001